

TWENTY

EDIMAX
C E R A M I C H E



Vivere a colori

Living in color

- 04 Colors
- 12 Blues
- 20 Freedom
- 28 Night&Day
- 36 Black&White
- 44 Stardust
- 52 Moonlight



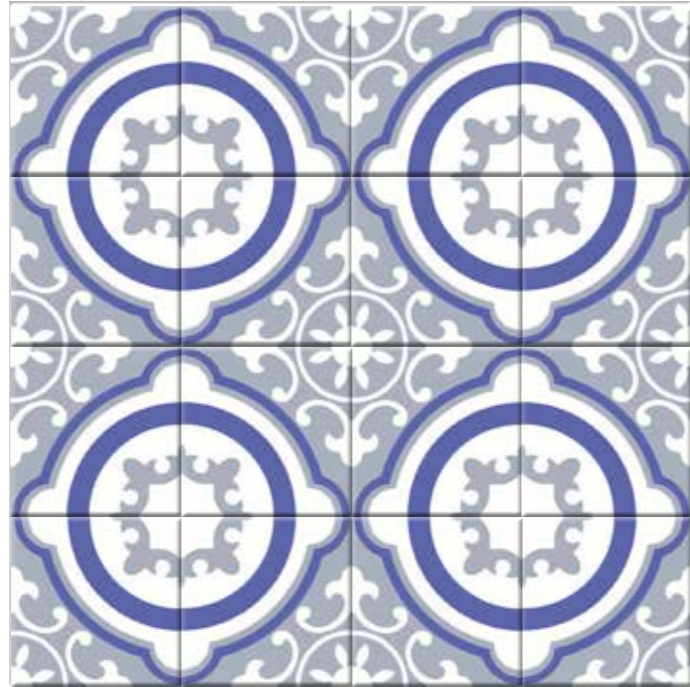
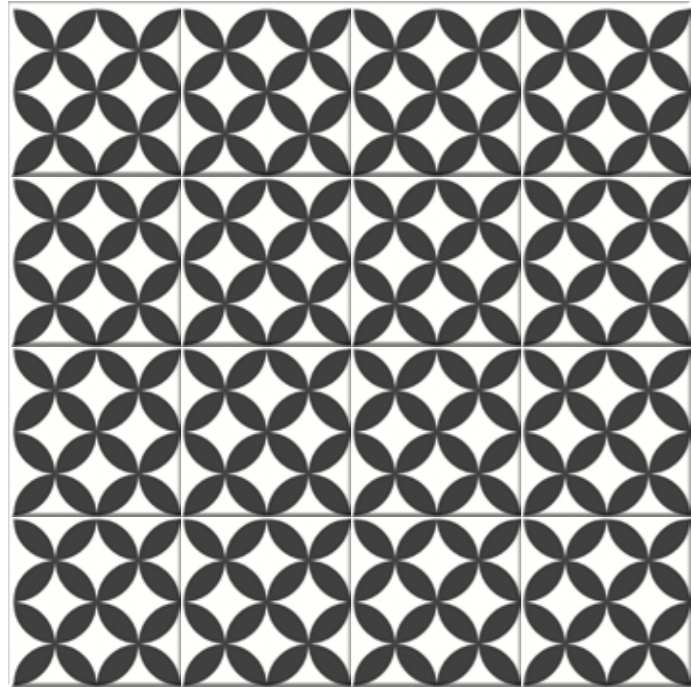
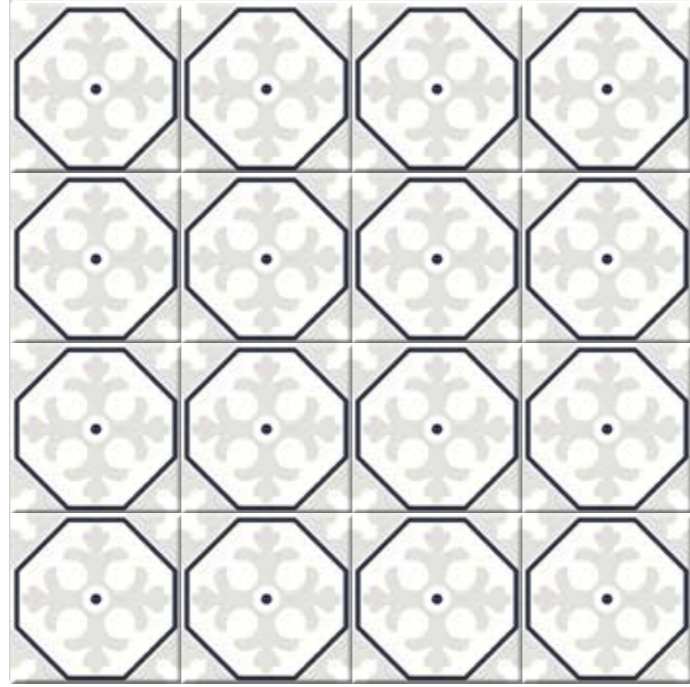
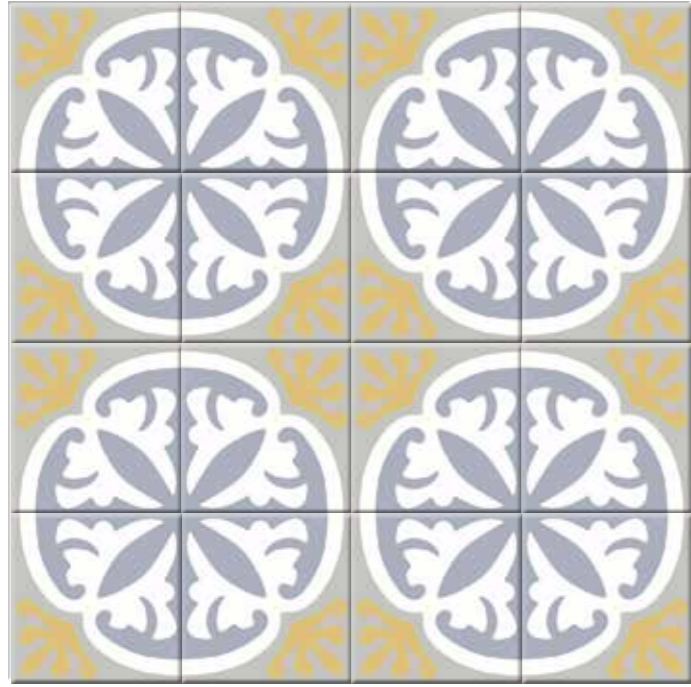


Twenty
Colors



Una perfetta sintonia tra spazio, materia e colore

*A perfect harmony
between space, matter
and color*



vivace
moderno
divertente

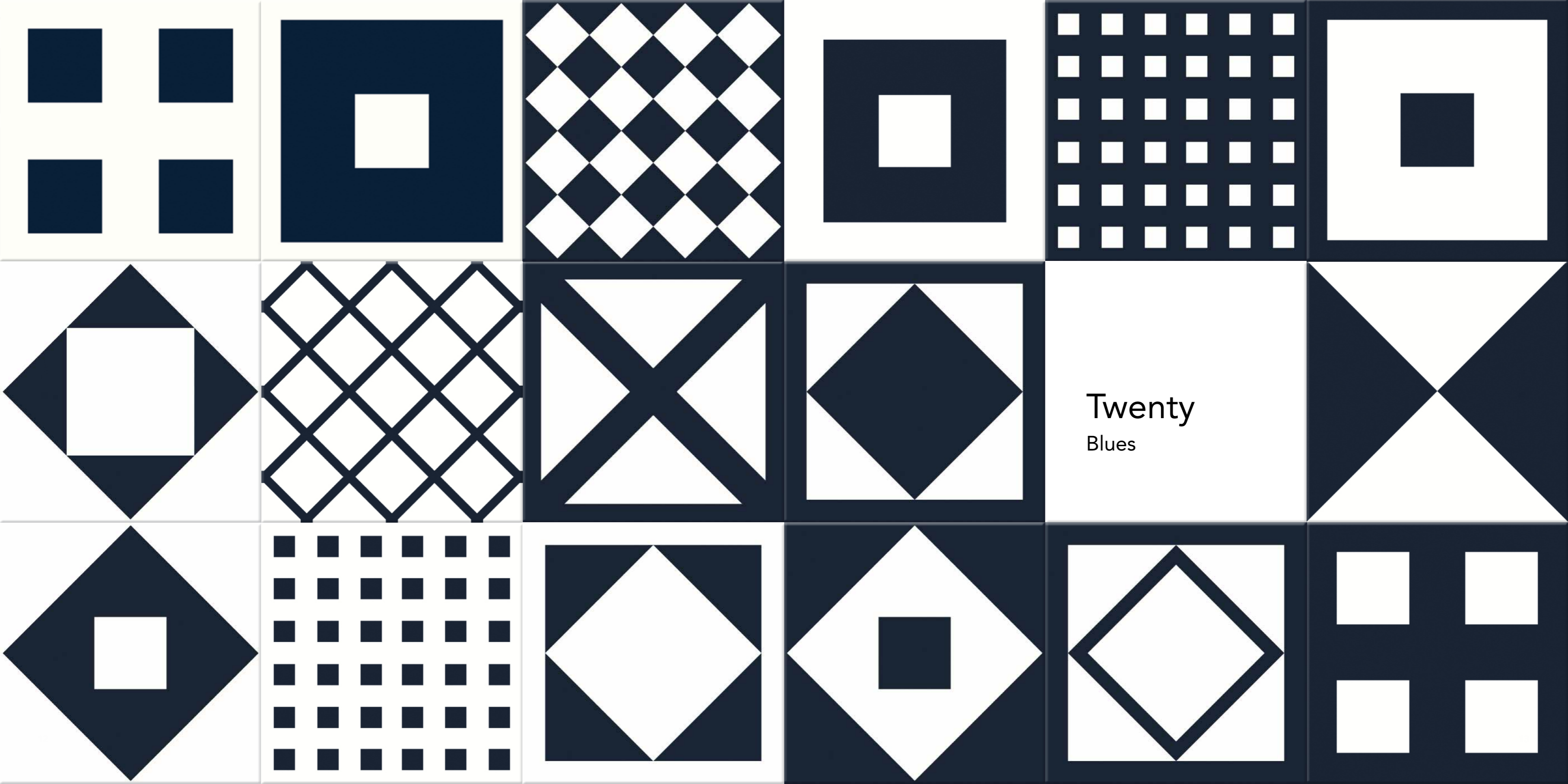


*lively
modern
funny*

Una collezione dal forte impatto visivo che con le sue molteplici combinazioni cromatiche permette di arredare spazi privati e commerciali in modo brioso e fresco.

A collection with a strong visual impact that with its multiple color combinations allows to furnish private and commercial spaces in a lively and fresh way.





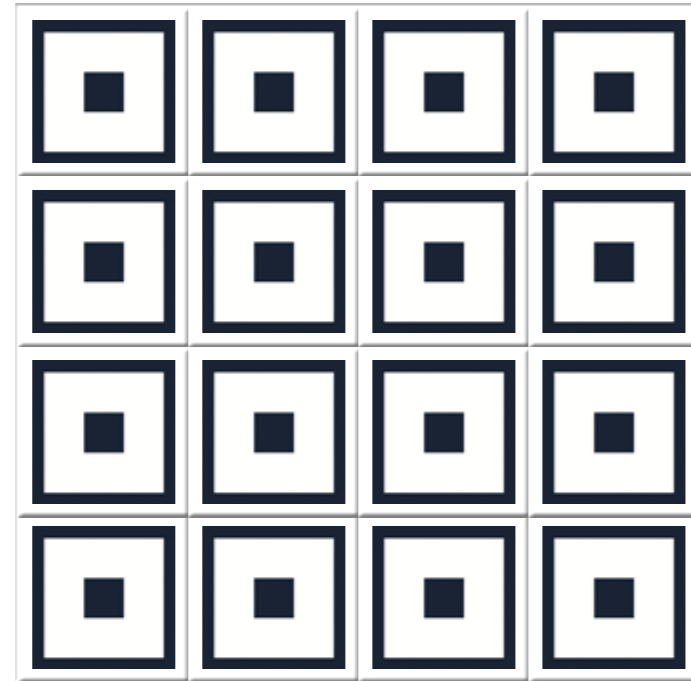
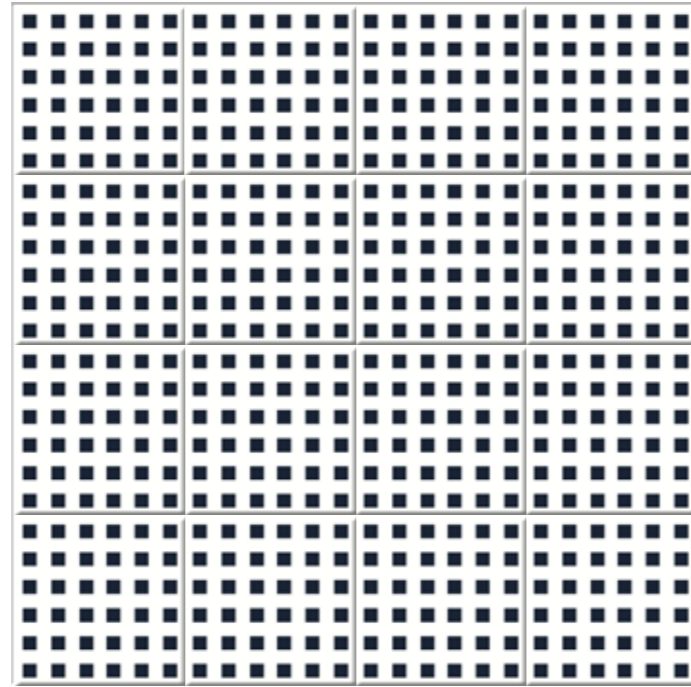
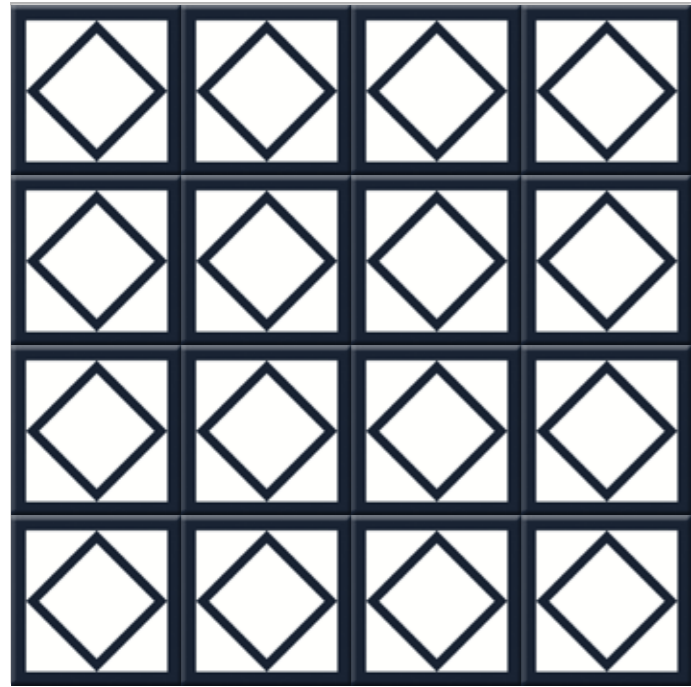
Twenty
Blues



IMMAGINE DA
SOSTITUIRE

Contrasti essenziali per un mix attuale e ricercato

*Essential contrasts for a
current and refined mix*



dinamico
 contrastato
 pieno



*dynamic
 thwarted
 full*

Un tuffo nel colore puro, pieno. La bicromia, protagonista assoluta dello spazio, si esprime con forme decise e geometriche: quadrati, rombi, griglie e giochi di contrasti arredano gli ambienti in modo dinamico e deciso.

A dip in pure, full color. The two-colors, absolute protagonists of the space, are expressed with decisive and geometric shapes: squares, rhombuses, grids and contrast games furnish the rooms in a dynamic and decisive way.



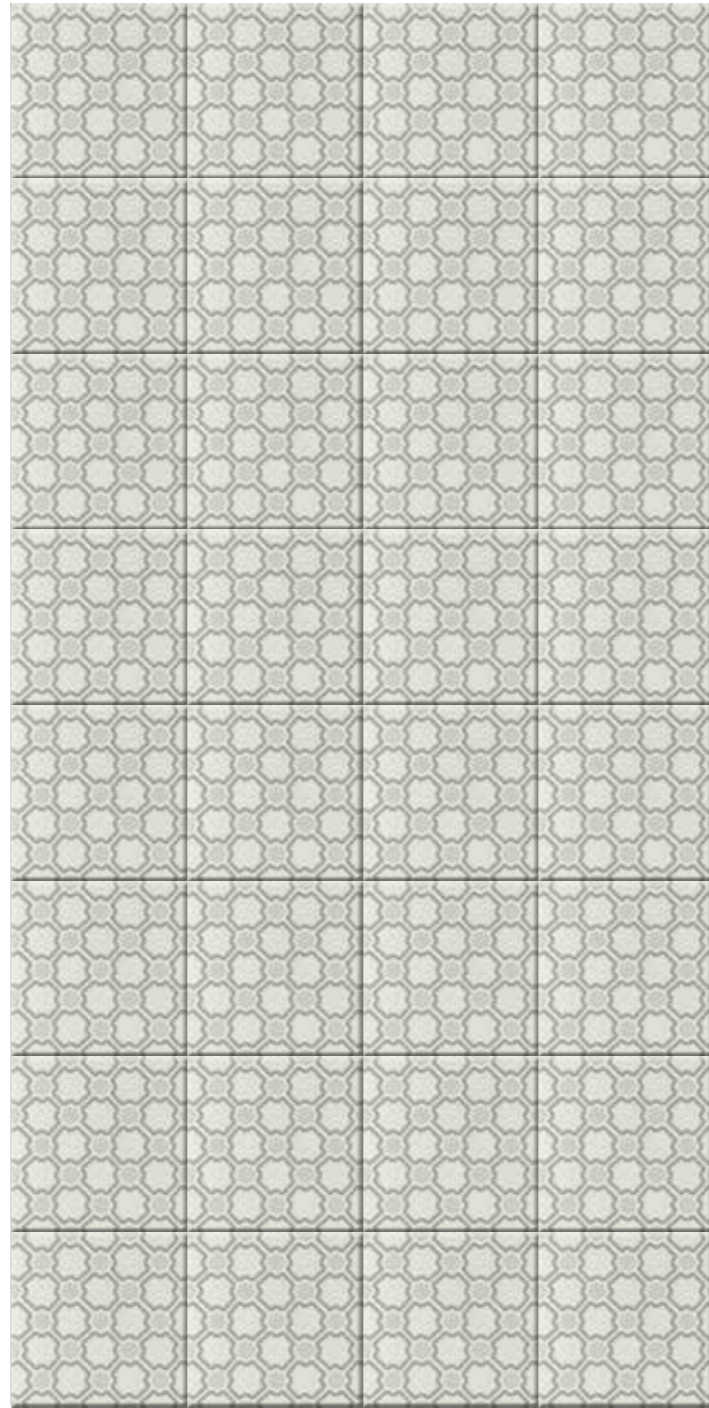
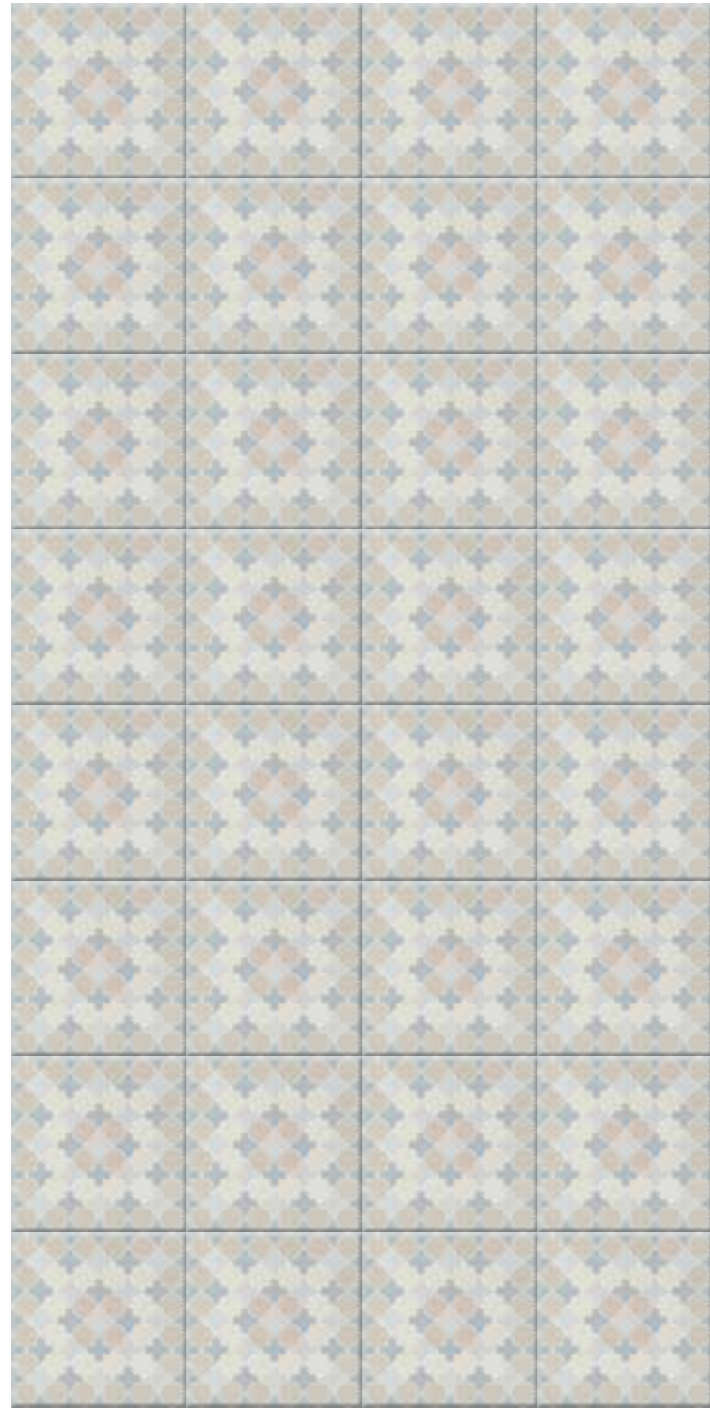


Twenty
Freedom



Forme morbide e preziose che arredano con design in modo seducente

*Soft and precious shapes
that furnish with design in a
seductive way*



fresco
accattivante
ricco



*fresh
captivating
rich*

Pattern molto decorativi riempiono gli ambienti di fascino ed eleganza, texture variegate giocano con colori pastellati e rilassanti offrendo allo sguardo variazioni tonali e grafismi raffinati.

Very decorative patterns fill the rooms with charm and elegance, varied textures play with pastel and relaxing colors, offering to the eye tonal variations and refined graphics.



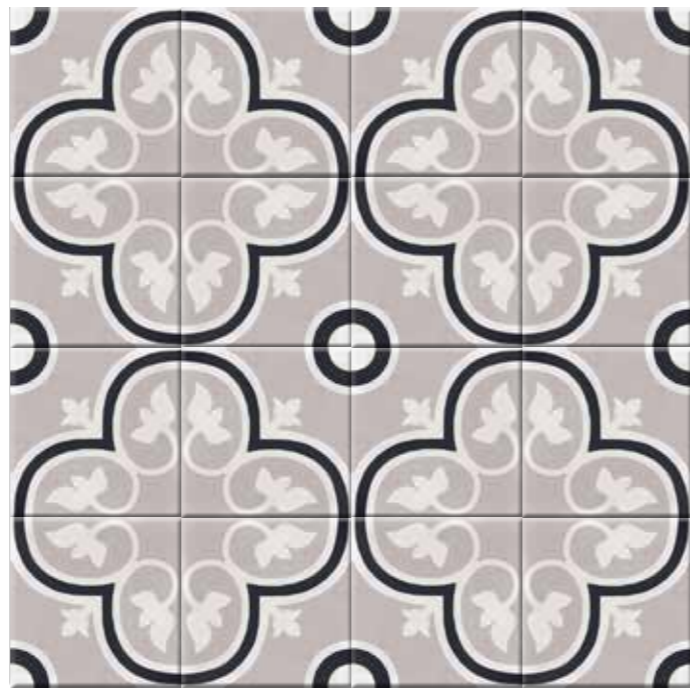
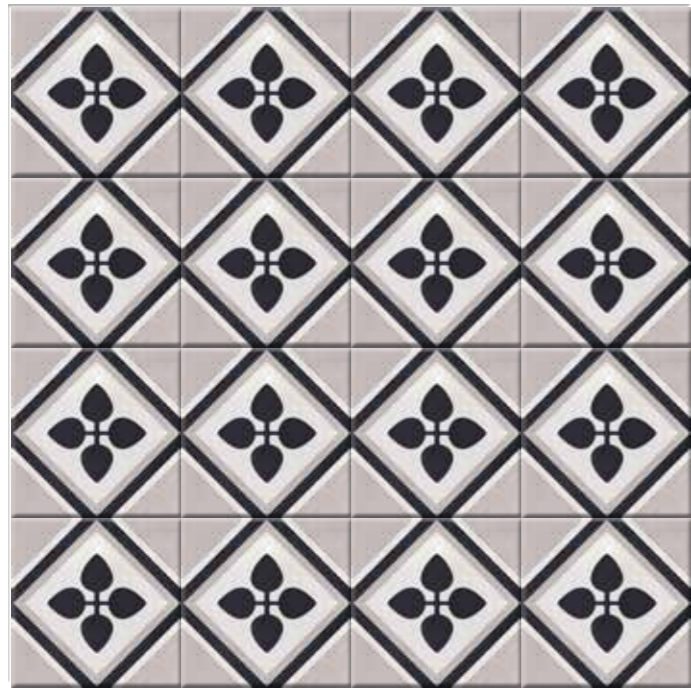
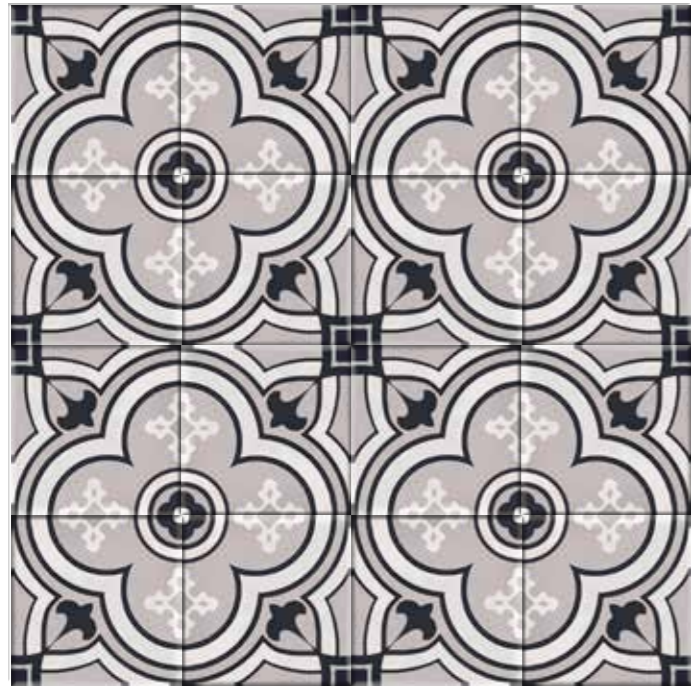


Twenty
Night&Day

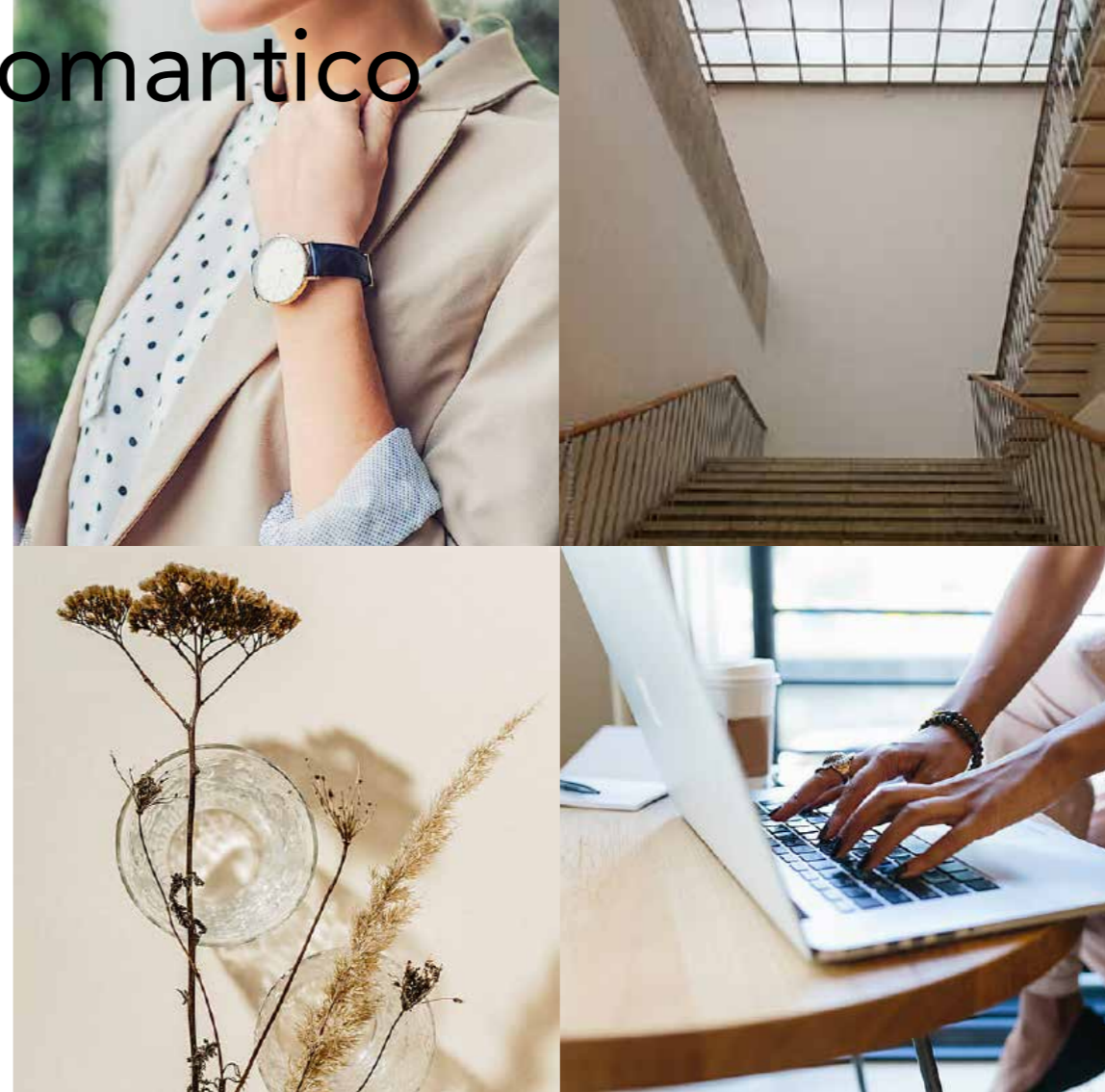


Un segno classico modulato in chiaro scuro per una lettura moderna e contemporanea

*A classic sign expressed in light
and shade for a modern and
contemporary action*



glamour
attuale
romantico

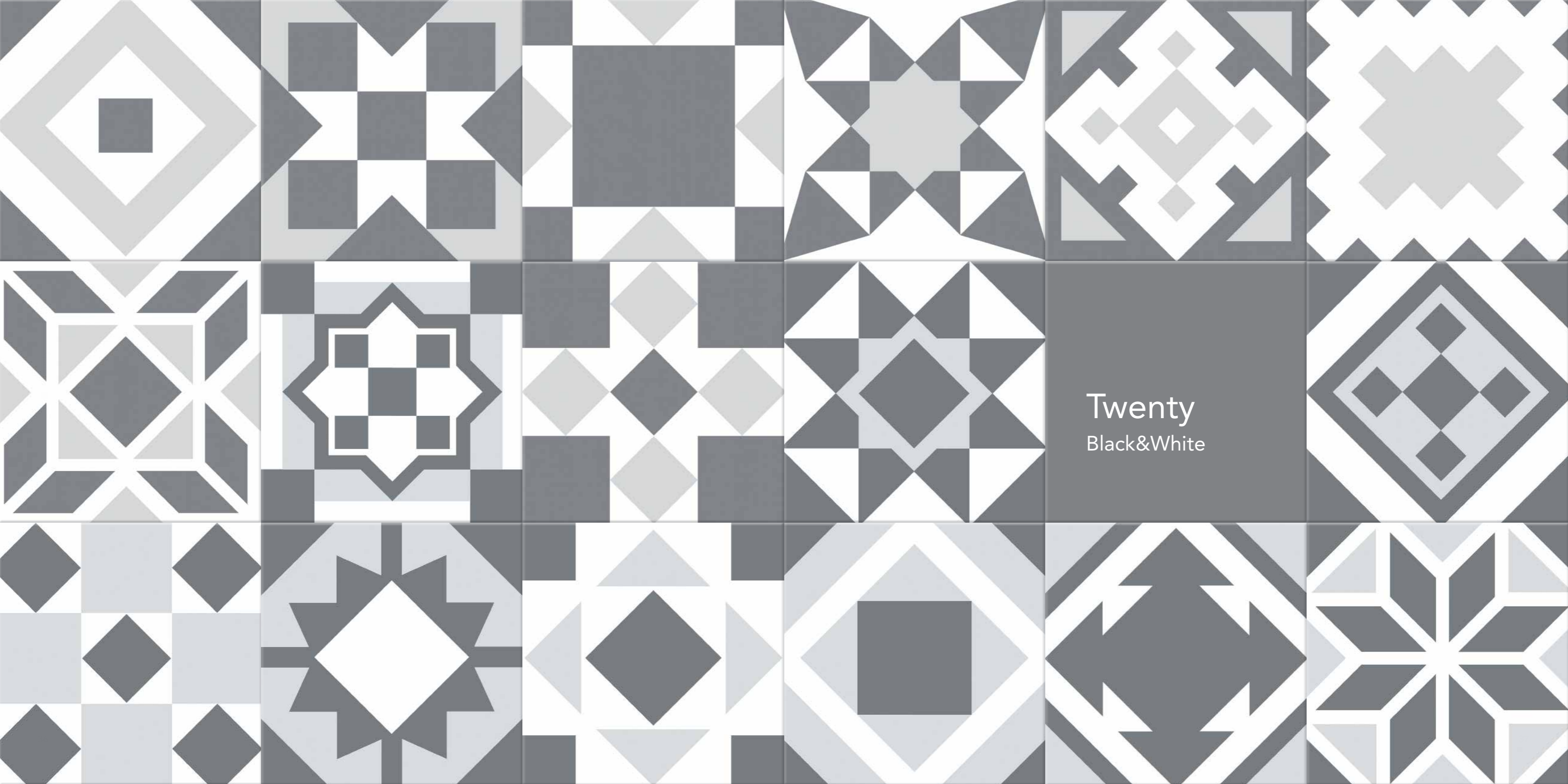


*glamorous
current
romantic*

Una superficie che porta con sé il fascino del tempo. Suggestioni retrò di raffinata interpretazione in perfetta sintonia con le tonalità di un design ricercato e sempre attuale.

A surface that brings with it the charm of time. Retro suggestions of refined interpretation in perfect harmony with the shades of a refined and always up-to-dated design.



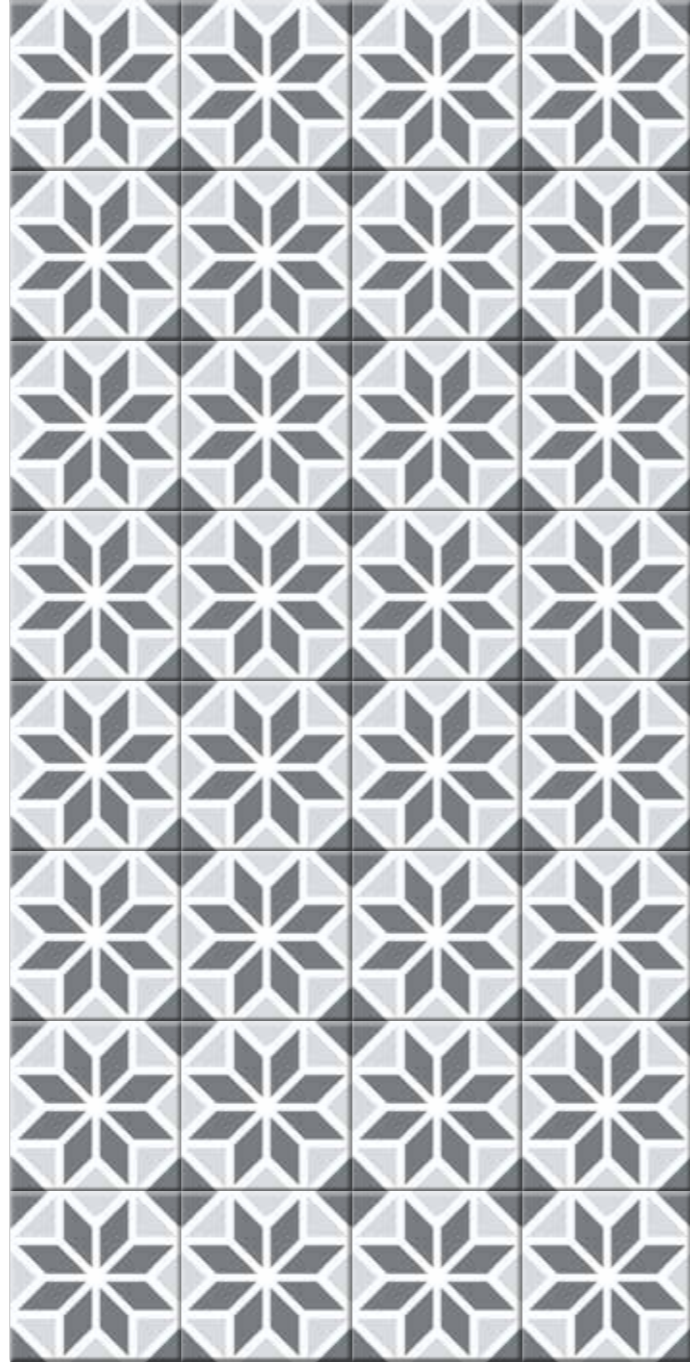
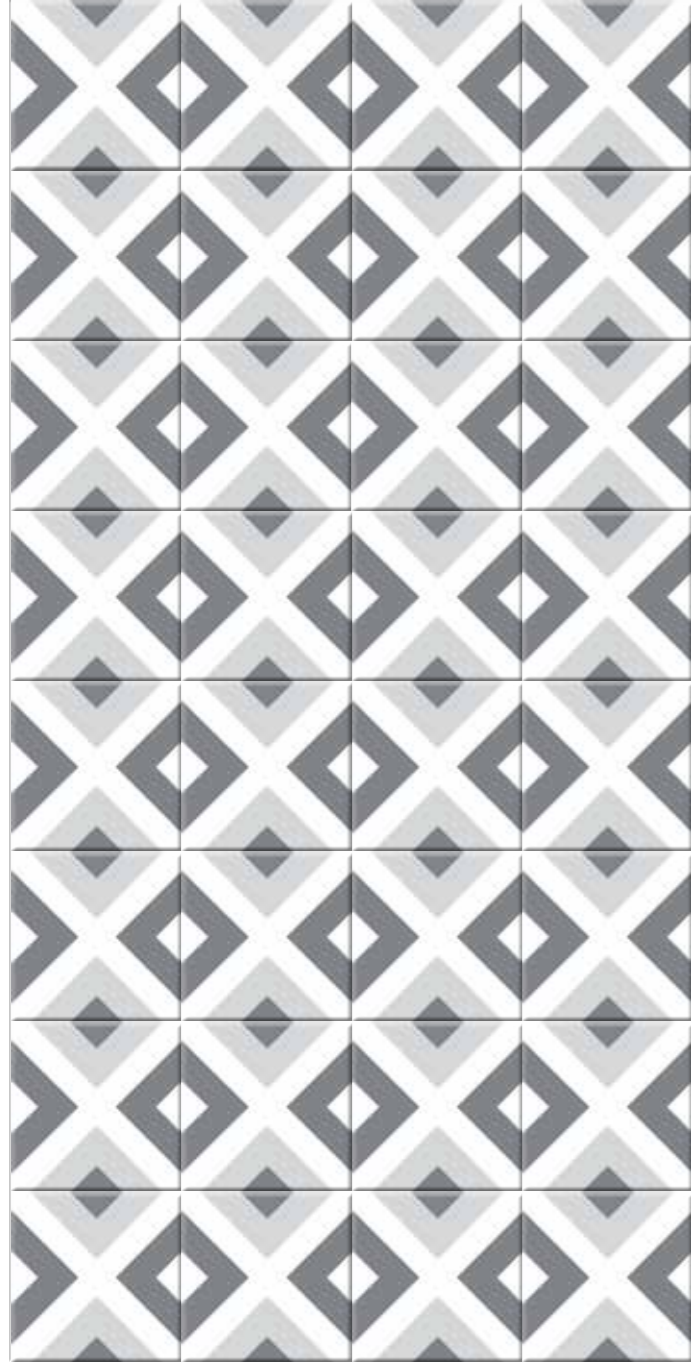


Twenty
Black&White



Il bianco e il nero in un equilibrio perfetto di forme come un sapiente gioco di incastri

Black and white in a perfect balance of shapes as a skillful game of joints



geometrico
optical
di carattere



*geometric
optical
character*

Lo spazio acquista carattere e personalità con giochi di bianco e nero che duettano su volumi e superfici senza mai stancare.

The space acquires character and personality with games of black and white that duet on volumes and surfaces without ever tiring.



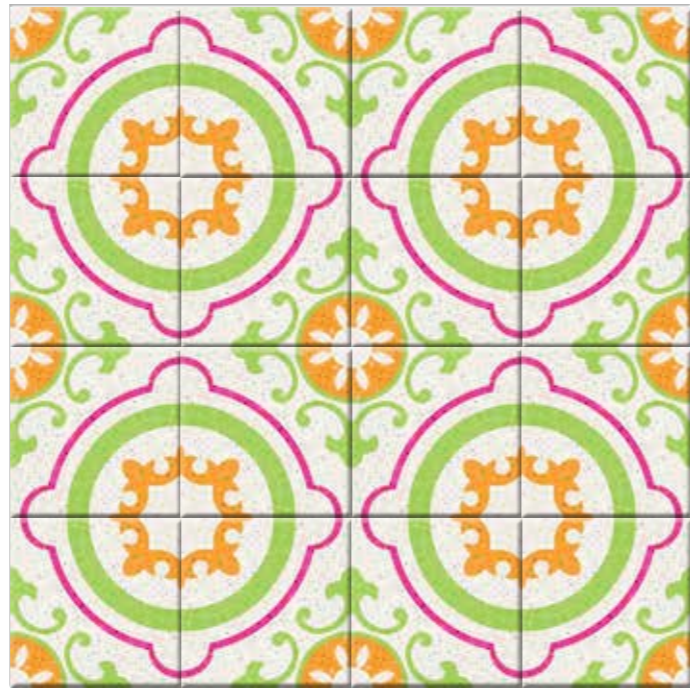
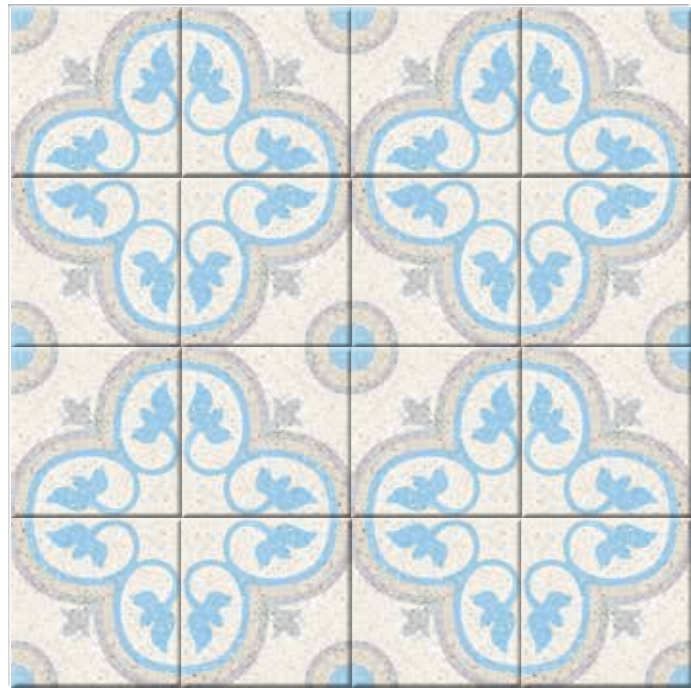
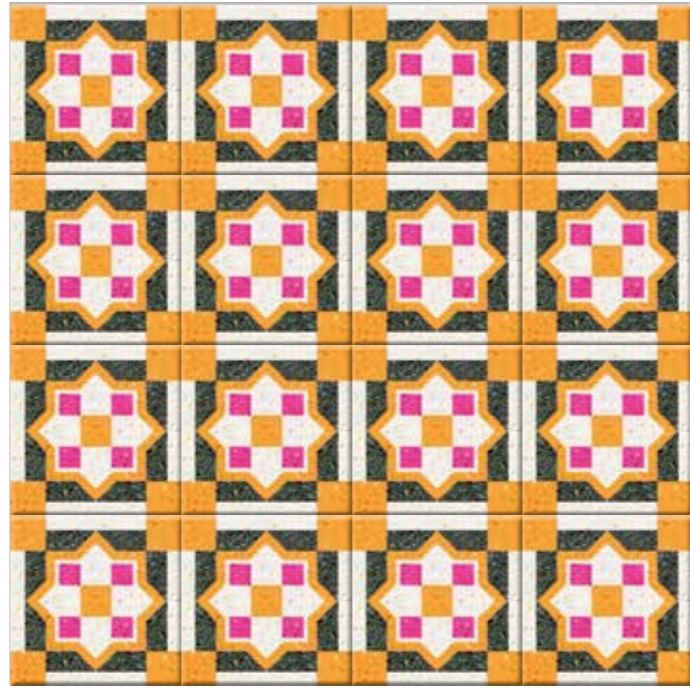
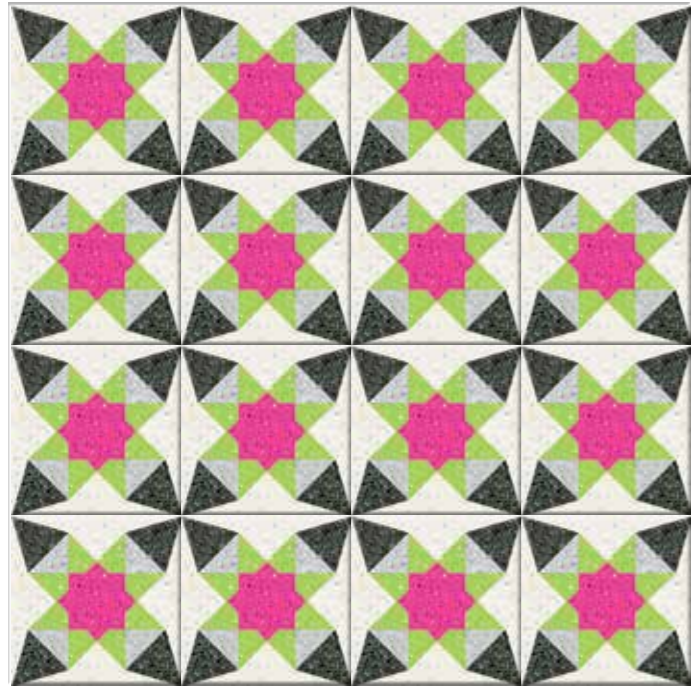


Twenty
Stardust



Toni e accostamenti ricercati per atmosfera eleganti e senza tempo

*Tones and sophisticated
combinations for elegant
and timeless atmospheres*



inusuale
seducente
caldo



unusual
seductive
warm

Quando la materia esprime fascino ed ogni colore cattura l'attenzione. Un tappeto grafico dal mood eclettico, pervaso di cromatismi e gusto per il bello.

When the matter expresses charm and each color captures the attention. A graphic carpet with an eclectic mood, full of colors and taste for beauty.



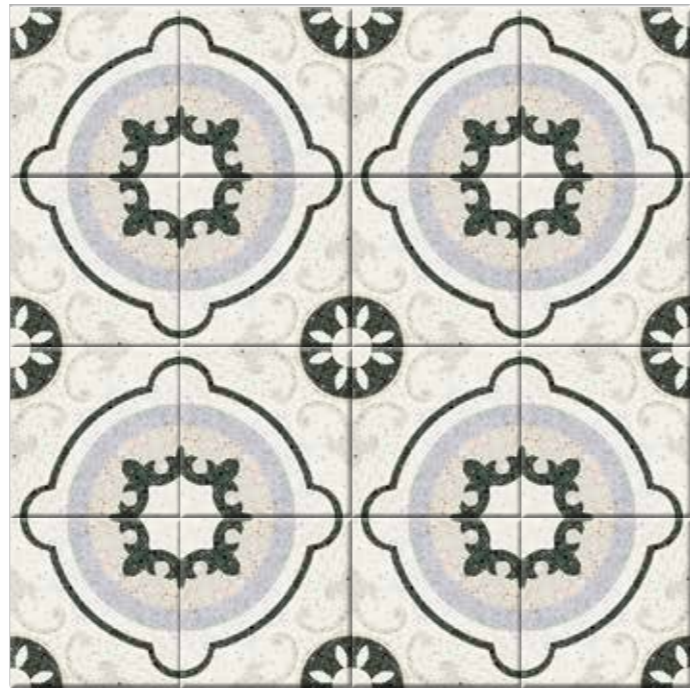
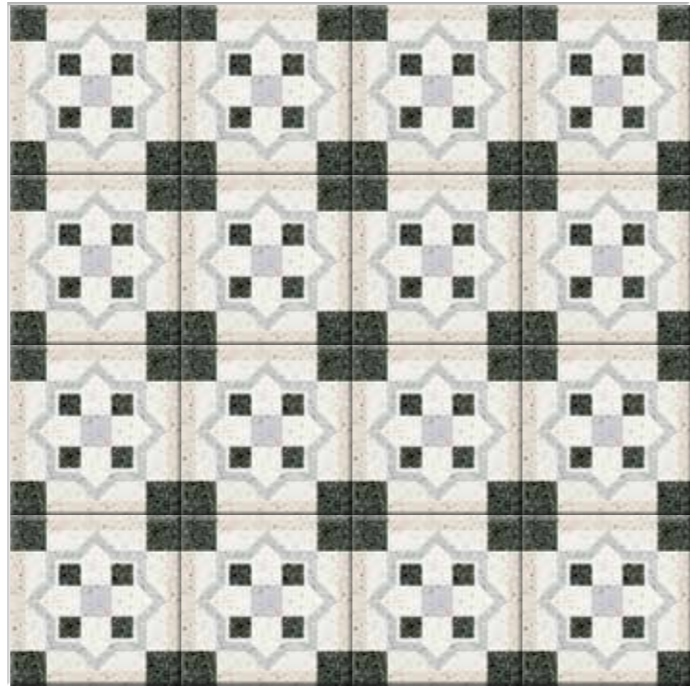
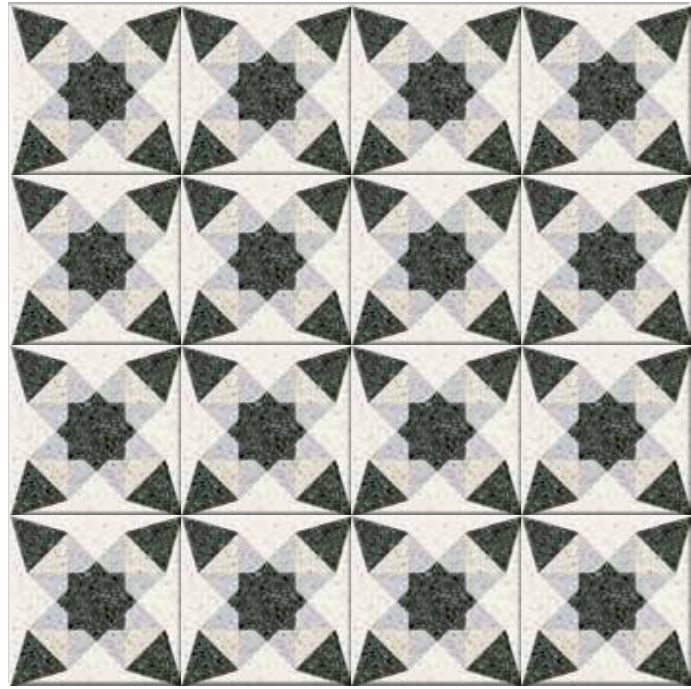


Twenty
Moonlight



Un linguaggio fatto di toni chiari e scuri per ambienti dall'architettura raffinata

A language made of light and dark tones for environments with refined architecture



rivisitato
architettonico
nobile



*revisited
architectural
noble*

Da un pavimento in graniglia i disegni affiorano lasciando spazio a diverse combinazioni geometriche che regalano un'estetica moderna, dallo stile colto e raffinato.

From a grit floor, the designs surface leaving room for different geometric combinations that give a modern aesthetic, with a refined and cultivated style.



Colors



COLORS MIX 20X20 (8"X8") RET
B156



COLORS DECORO A
20X20 (8"X8") RET
B157

COLORS DECORO B
20X20 (8"X8") RET
B158

COLORS DECORO C
20X20 (8"X8") RET
B179

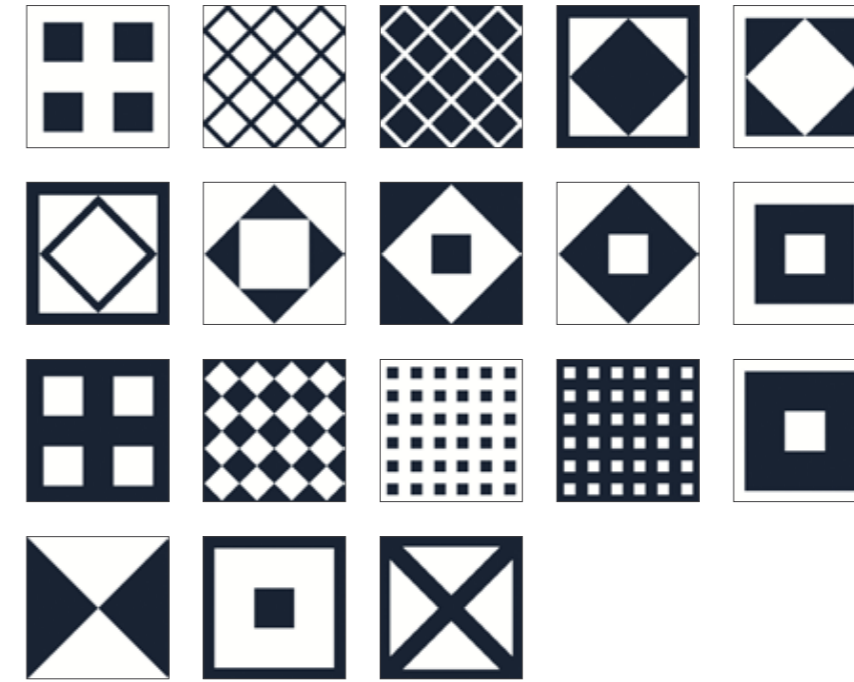
COLORS DECORO D
20X20 (8"X8") RET
B180

PAVIMENTI



20X20 (8"X8")RET
B148 PLAIN WHITE

Blues



BLUES MIX 20X20 (8"X8") RET
B152



BLUES DECORO A
20X20 (8"X8") RET
B175

BLUES DECORO B
20X20 (8"X8") RET
B176

BLUES DECORO C
20X20 (8"X8") RET
B177

BLUES DECORO D
20X20 (8"X8") RET
B178

PAVIMENTI



20X20 (8"X8")RET
B148 PLAIN WHITE



20X20 (8"X8")RET
B150 PLAIN BLUE

Freedom



FREEDOM MIX 20X20 (8"X8") RET
B171



FREEDOM DECORO A
20X20 (8"X8") RET
B172



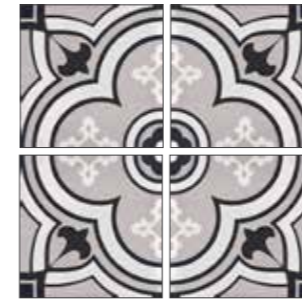
FREEDOM DECORO B
20X20 (8"X8") RET
B173

PAVIMENTI

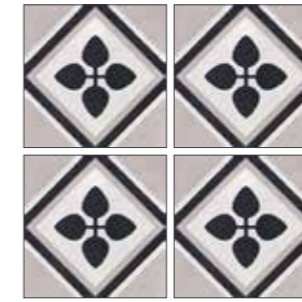


20X20 (8"X8")RET
B151 CLAY WHITE

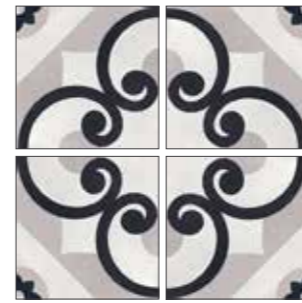
Night&Day



NIGHT & DAY DECORO A
20X20 (8"X8") RET



NIGHT & DAY DECORO C
20X20 (8"X8") RET



NIGHT & DAY DECORO B
20X20 (8"X8") RET



NIGHT & DAY DECORO D
20X20 (8"X8") RET



NIGHT & DAY DECORO A
20X20 (8"X8") RET
B154



NIGHT & DAY DECORO C
20X20 (8"X8") RET
B185



NIGHT & DAY DECORO B
20X20 (8"X8") RET
B155



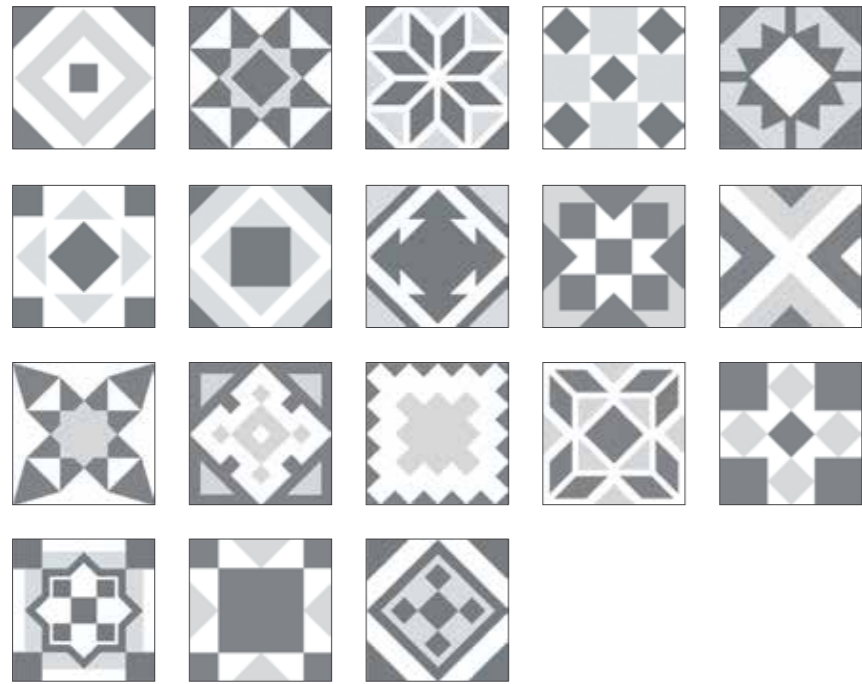
NIGHT & DAY DECORO D
20X20 (8"X8") RET
B186


PAVIMENTI




20X20 (8"X8")RET
B151 CLAY WHITE

Black and White




BLACK & WHITE MIX 20X20 (8"x8") SATIN RET  B194



BLACK & WHITE DECORO A
20X20 (8"x8") SATIN RET  B192



BLACK & WHITE DECORO B
20X20 (8"x8") SATIN RET  B193

PAVIMENTI

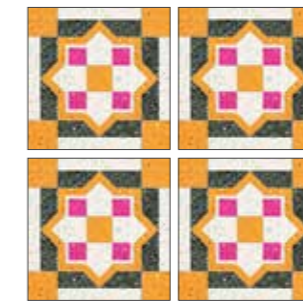


19,7X19,7 (8"x8") RET
1AR5 CARRARA

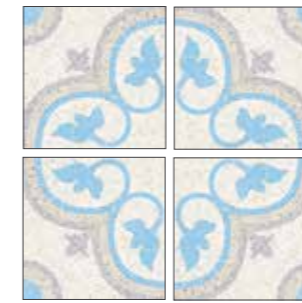
Stardust



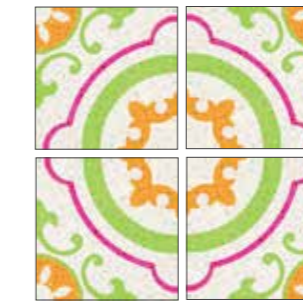
STARDUST DECORO A
20X20 (8"x8") RET



STARDUST DECORO B
20X20 (8"x8") RET




STARDUST DECORO C
20X20 (8"x8") RET




STARDUST DECORO D
20X20 (8"x8") RET




STARDUST DECORO A
20X20 (8"x8") LUX RET  B166




STARDUST DECORO B
20X20 (8"x8") LUX RET  B167




STARDUST DECORO C
20X20 (8"x8") LUX RET  B190




STARDUST DECORO D
20X20 (8"x8") LUX RET  B191

PAVIMENTI




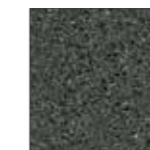
20X20 (8"x8") LUX RET  B162 FLAKES WHITE




20X20 (8"x8") LUX RET  B163 FLAKES IVORY



20X20 (8"x8") LUX RET  B164 FLAKES GREY

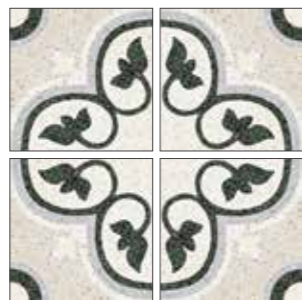


20X20 (8"x8") LUX RET  B000 FLAKES BLACK

Moonlight



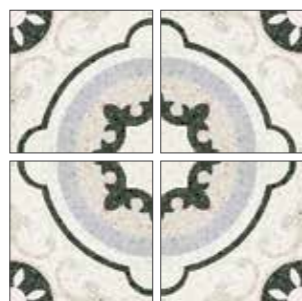
MOONLIGHT DECORO A
20X20 (8"X8") RET



MOONLIGHT DECORO C
20X20 (8"X8") RET



MOONLIGHT DECORO B
20X20 (8"X8") RET



MOONLIGHT DECORO D
20X20 (8"X8") RET



MOONLIGHT DECORO A
20X20 (8"X8") LUX RET ●
B169



MOONLIGHT DECORO B
20X20 (8"X8") LUX RET ●
B170



MOONLIGHT DECORO C
20X20 (8"X8") LUX RET ●
B181



MOONLIGHT DECORO D
20X20 (8"X8") LUX RET ●
B182

PAVIMENTI



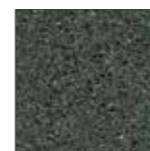
20X20 (8"X8") LUX RET ●
B162 FLAKES WHITE



20X20 (8"X8") LUX RET ●
B163 FLAKES IVORY



20X20 (8"X8") LUX RET ●
B164 FLAKES GREY



20X20 (8"X8") LUX RET ●
B000 FLAKES BLACK

INFORMAZIONI GENERALI - GENERAL INFORMATION






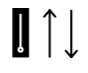

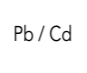





- Prodotto in porcellanato smaltato con impasti colorati. Superfici naturali. Bordi rettificati.
Coloured body glazed porcelain tiles and rectified edges. Natural surfaces. Rectified edges.
- Tutte le misure sono nominali. Le conversioni in pollici sono approssimate ed arrotondate.
All sizes are nominal. The conversions into inches are approximate and rounded off.
- Le confezioni contengono il prodotto con diverse sfumature di tono, venature e strutture con direzionalità. Al fine di ottenere il migliore effetto estetico, si consiglia, durante la posa, di prelevare le piastrelle alternativamente da scatole diverse e di posarle in senso ortogonale l'una all'altra.
The boxes contain the item with different shade variegations, veins and structures with direction. When you lay down the tiles, in order to obtain the best blend of the colours, we advice you to take the tiles alternatively from different boxes and lay down orthogonally one to the other.
- Per i formati rettangolari consigliamo una posa sfalsata massimo di 1/4 della lunghezza.
For the rectangular sizes we suggest an installation pattern at a maximum of 1/4 of the entire length.
- Bordi rettificati: nella posa mono e multi-formato è consigliato prevedere fughe di almeno 2 mm.
Rectified edges: when you lay down single and multi sizes it is suggested to use grouts of at least 2 mm.
- Ci riserviamo la facoltà di modificare e/o eliminare i formati, i calibri, gli spessori e le grafiche in qualsiasi momento senza che si renda necessaria una espressa comunicazione scritta.
We reserve the right to modify and/or remove the sizes, the calibers, the thickness and the graphics anytime, with no obligation of a further notice in writing.
- I toni degli articoli campionati sono puramente indicativi pertanto le variazioni di tono e di superficie non possono costituire motivo di contestazioni.
The shades of the samples are purely representative of the item itself so the shades variation and the surfaces variations cannot constitute the reason for a claim.
- Articoli LUX, SATIN E LAPPATI: le lavorazioni di lucidatura, levigatura, satinatura e lappatura, effettuate allo scopo di valorizzare l'aspetto estetico dei prodotti, mettono in evidenza la lucentezza della superficie, l'eterogeneità della materia e le porosità della stessa: queste caratteristiche sono tipiche e presenti tanto nelle pietre naturali quanto nel gres porcellanato. Consigliamo pertanto l'utilizzo di tutte le precauzioni (zerbini/tappeti per la pulizia delle scarpe, pulizia in fase di posa e pulizia successiva ordinaria con prodotti Ph neutro, ecc...) al fine di salvaguardare il più possibile la lucentezza e ridurre eventuali graffi e/o macchie della superficie dei prodotti. Sconsigliamo l'utilizzo dei suddetti prodotti in aree a medio ed alto traffico.
Items LUX, SATIN and SEMIPOLISHED: The polishing, honing, and semipolishing processes, carried out to enhance the aesthetical aspect of the products, highlight the brightness of the surface, the heterogeneity and the porosity of the matter: these characteristics are typical and present both in natural stones and in porcelain gres. We therefore recommend the use of all precautions (doormats / carpets for cleaning shoes, cleaning during laying and ordinary cleaning with neutral Ph products, etc....) in order to safeguard as much as possible the shine and reduce as much as possible eventual scratches and / or stains of the surface of the products. We advise against the use of the aforementioned products in medium and high traffic areas.

SIMBOLOGIA - SYMBOLOGY

RET: rettificato - rectified

LUX: levigato - polished

SATIN: satinato - sained

Superficie naturale, Satinata e Lux Natural, sained and polished surface											Superficie naturale Natural surface			
Spessore	Durezza della superficie	Assorbimento d'acqua	Carico di rottura	PEI Resistenza all'abrasione superficiale	Resistenza agli sbalzi termici	Resistenza al cavillo	Cessione Piombo Cadmio	Conducibilità Termica	Resistenza al gelo	Coefficiente dinamico di frizione		Resistenza chimica	Resistenza allo scivolamento	
Thickness	Hardness of the surface	Water absorption	Modulus of rupture	Resistance to surface abrasion	Resistance to thermal shock	Crazing resistance	Emission Lead Cadmium	Electrical Conductivity	Frost resistance	Dynamic coefficient of friction		Chemical resistance	Slip resistance	
	E.N. 101	ISO 10545-3	ISO 10545-4	ISO 10545-7	ISO 10545-9	ISO 10545-11	ISO 10545-15	UNI E.N. 1745	ISO 10545-12	ANSI A.137		ISO 10545-13	DIN 51130	
														
10 mm	MOHS 5	< 0,5 % Bla	43 N/mm ²	Naturale Natural 5	Satin/Lux Satin/Lux -	Garantita Guaranteed	Garantita Guaranteed	Pb < 0,1 Cd < 0,01	0,675 < CT < 0,715 W/mk	Garantita Guaranteed	SATIN > 0,42	LUX -	GA (V) GLA (V) GHA (V)	R10 A

Twenty

TABELLA DA AGGIORNARE





EDIMAX
C E R A M I C H E